

## Detailed Feature List

### Topics

Auralia features an amazing 59 ear training topics, with graded levels, lessons and customisation.

INTERVALS & SCALES	CHORDS	RHYTHM	HARMONY & FORM	MUSICAL ELEMENTS
<ul style="list-style-type: none"> <li>Interval Comparison</li> <li>Interval Imitation</li> <li>Interval Recognition</li> <li>Interval Singing</li> <li>Scales</li> <li>Jazz Scales</li> <li>Scale Singing</li> <li>Jazz Scale Singing</li> <li>Tonality</li> </ul>	<ul style="list-style-type: none"> <li>Chord Comparison</li> <li>Chord Imitation</li> <li>Chord Recognition</li> <li>Chord Singing</li> <li>Cluster Chords</li> <li>Jazz Chord Imitation</li> <li>Jazz Chord Singing</li> <li>Jazz Chords</li> </ul>	<ul style="list-style-type: none"> <li>Pulse Tapping</li> <li>Meter Recognition</li> <li>Rhythm Comparison</li> <li>Rhythm Elements</li> <li>Rhythm Element Dictation</li> <li>Rhythm Dictation</li> <li>Rhythm Imitation</li> <li>Rhythm Styles</li> <li>Two Part Rhythmic Dictation</li> </ul>	<ul style="list-style-type: none"> <li>Cadences</li> <li>Chord Progressions</li> <li>Advanced Progressions</li> <li>Pop Chord Progressions</li> <li>Part Dictation</li> <li>Advanced Part Dictation</li> <li>Jazz Progressions</li> <li>Forms &amp; Jazz Forms</li> <li>Modulation</li> <li>Melodic Motion</li> </ul>	<ul style="list-style-type: none"> <li>Dynamics</li> <li>Tempo</li> <li>Articulation</li> <li>Texture &amp; Density</li> <li>Compositional Devices</li> </ul>
PITCH & MELODY		REPERTOIRE		
<ul style="list-style-type: none"> <li>Pitch Comparison</li> <li>Pitch Imitation</li> <li>Contour</li> <li>Pitch Dictation</li> <li>Melodic Comparison</li> <li>Melodic Dictation</li> <li>Note Recognition</li> </ul>	<ul style="list-style-type: none"> <li>Absolute Pitch</li> <li>Atonal Melodic Dictation</li> <li>Counterpoint Singing</li> <li>Sight Singing</li> <li>Tuning</li> <li>Two Part Melodic Dictation</li> </ul>	<ul style="list-style-type: none"> <li>Work Identification</li> <li>Composer Identification</li> <li>Ensemble Identification</li> </ul>		

Musition boasts 59 theory topics, with graded levels, lessons and customisation.

PITCH	RHYTHM	GENERAL KNOWLEDGE		
<ul style="list-style-type: none"> <li>Note Reading</li> <li>Advanced Note Reading</li> <li>Enharmonic Notes</li> <li>Scale Degrees</li> <li>Intervals</li> <li>Scales</li> </ul>	<ul style="list-style-type: none"> <li>Jazz Scales</li> <li>Scale Home Keys</li> <li>Solfège Signing</li> <li>Stem Direction</li> <li>Melodic Motion</li> <li>Transposition</li> </ul>	<ul style="list-style-type: none"> <li>Rhythm Notation</li> <li>Rhythmic Subdivision</li> <li>Meter Recognition</li> <li>Meter Transposition</li> <li>Beaming</li> <li>Rhythm Tapping</li> </ul>	<ul style="list-style-type: none"> <li>Drum Sticking</li> <li>Drum Styles</li> <li>Polyrhythms</li> <li>Ties</li> <li>Complete the Bar</li> <li>Rhythm Syllables</li> <li>Rhythm Counting</li> </ul>	<ul style="list-style-type: none"> <li>Periods</li> <li>Composers</li> <li>Texture &amp; Density</li> </ul> <p><b>COMPOSITION</b></p> <ul style="list-style-type: none"> <li>Compositional Devices</li> <li>Mechanical Voicings</li> </ul>
HARMONY	INSTRUMENTS	TERMS & SYMBOLS		
<ul style="list-style-type: none"> <li>Key Signatures</li> <li>Chords</li> <li>Diatonic Chords</li> <li>Chromatic Chords</li> <li>Jazz Chords</li> <li>Figured Bass</li> <li>Chord / Scale Relationships</li> </ul>	<ul style="list-style-type: none"> <li>Modulation</li> <li>Cadences</li> <li>Nonharmonic Tones</li> <li>Chord Progressions</li> <li>Advanced Progressions</li> <li>Harmonization</li> <li>Four Part Writing</li> </ul>	<ul style="list-style-type: none"> <li>Instrument Recognition</li> <li>Instrument Knowledge</li> <li>Keys</li> <li>Transposition</li> </ul>	<ul style="list-style-type: none"> <li>Clef Transposition</li> <li>Instrument Range</li> <li>Piano Keyboard</li> </ul>	<ul style="list-style-type: none"> <li>Concepts</li> <li>Terms</li> <li>Symbols</li> <li>Jazz Chord Symbols</li> <li>Guitar Symbols</li> <li>Ornaments</li> </ul>

#### CONTACT

[www.risingsoftware.com](http://www.risingsoftware.com)  
 USA: 1-888-667-7839  
 Int: +61 3 9481 3320

## Student Tasks

### TESTS & WORKSHEETS

- Create your own tests & worksheets (no limit)
- Sequences of questions from any topic
- Assign to any class
- Timeslots to control availability
- Tests provided for most included syllabi
- Multiple attempts supported
  - Scores recorded separately for each attempt
- Hide scores from students
- Enable/disable resumption and question feedback
- Specify number of question plays
- Playback control
  - Immediate or student started
  - Allow pause if required
  - Mixer support
- Tests using library questions exclusively have entire student answers recorded
  - Instructors view answers in grading area

### TESTS & WORKSHEETS - ADVANCED

- Question selection - random
  - Great for worksheets
- Question selection - fixed (library)
  - Perfect for exams
  - Easily create question banks
- Test navigation
  - Students can move between questions
  - Review answers before submission
- Time limits
  - Entire test or individual entries
- Question threading
  - Create 'pathways' through a test
- Question grading and regrading
- Playback overrides
  - Metronome, Countin, Starting Pitch
- Recording overrides
  - Attempts, answer reievw, metronome
  - Starting pitch and tempo preview
- Chord Palette Customisation

### COURSES

- Create your own courses (no limit)
- Automatically guide students through topics, lessons and tests
- Assign to any class
- Timeslots to control availability
- Courses provided for most included syllabi
- Multiple attempts supported
  - Scores recorded separately for each attempt
- Hide scores from students
- Enable/disable resumption
- Hide scores from students
- Import and export courses and tests

## Curriculum

### SYLLABUS

- Customise content of any topic
- Create your own level structures
- Map content to your curriculum
- Import and export syllabuses
- Integrate library questions
- Create custom topics using library questions
- Many syllabi provided ready for use & mapped to curriculum

### LESSONS

- Lessons available for all topics
- Hundreds of pages of information
- Notation and audio examples
- Integrated into courses

### MISCELLANEOUS

- Create custom chords
- Create custom scales
- Create custom terms
- Create custom concepts

### TERMINOLOGY

- Dual note terminology (quarter notes vs. crotchets)
- Dual cadence terminology (deceptive vs. interrupted)
- Figured & contemporary chord symbols
- Contemporary chord symbol selection
- Chord name customisation
- Beaming & grouping options

### SINGING

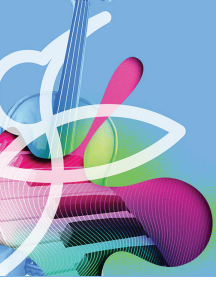
- Microphone input
- SATB vocal range support
- Custom student vocal range
- Microphone setup wizard
- Student singing playback for instant review
- Recording questions - Library

### PRACTISE

- 59 ear training topics (Auralia)
- 58 theory topics (Musition)
- Random question selection
- Integrated library questions
- Change tempo of examples
- Various syllabi to choose from
- Graded levels in each topic
- Custom levels created by students 'on the fly'
- Professor to guide students through levels
- Enable or disable mixer
- Enable or disable metronome
- Switch between onscreen controllers

### CONTACT

[www.risingsoftware.com](http://www.risingsoftware.com)  
USA: 1-888-667-7839  
Int: +613 9481 3320



# Musition

# Auralia



## Library

### CONTENT

- Audio playback & import
  - Audio - mp3, wav, mp4, aac, flac, ogg
  - Notation create, playback and display
  - MusicXML import
  - Image display & import
  - Images - jpg, png, svg
    - Size and placement controls
  - MIDI file playback & import
  - Instructor assessed questions
- 
- Hundreds of included content items and questions
  - Ongoing updates to the library

### NOTATION QUESTIONS - SIMPLE

- Highlight items
    - Notes, bars & parts
  - Bar Lines
  - Key Signature
  - Beaming
  - Text areas above or below notes
    - Enter text answer
    - Choose item from a list
- 
- Automatic assessment
  - Sophisticated notation manipulation

### NOTATION QUESTIONS - ADVANCED

- Notate - enter notes
  - Single and multi part
- Chord Symbol Entry
  - Figured or contemporary
- Creative - enter notes
  - Full control over score setup
  - Excellent for composition, harmony, arranging
  - Instructor assessed

### MULTIPLE CHOICE QUESTIONS

- Multiple choice answer types
  - Text
  - Image
  - Audio
  - Notation
  - MIDI
- Questions can have more than one correct answer
  - 'All correct answers chosen' supported
- Random or fixed answer positioning
- Feedback response options for each answer

### RECORDING QUESTIONS

- Free recording
- Sing a displayed work
- Sing along - record with playback
- Imitate - record after playback
- Metronome & countin support
- Starting pitch - tonic note, chord, cadence
- Student review & number of attempts

### FREE TEXT QUESTIONS

- Listen or view a score
- Enter a response
  - Single and Multiple lines
- Word limits
- Instructor assessed

### TAPPING QUESTIONS

- Tap displayed rhythm
- Tap the played rhythm (audio or notation)
- Imitate the played rhythm
- Tapping accuracy control

### FOUR PART WRITING QUESTIONS

- Automatically assessed
- High quality student feedback
- Customisable rules and scoring / weighting
  - Parallel Unison/5ths/8ves
  - Voice crossing & overlapping
  - Hidden 5ths/8ves
  - Chord Spelling including doubling & omissions
  - Range & spacing
  - Leading tone resolution
  - Chordal 7th preparation & resolution
  - Unequal 5ths & cross relations
  - Illegal melodic intervals
- Integrated learning sequences

### NOTATION CREATION & EDITING

- Easily create your own rhythms, melodies & harmonic examples for student use
- Unlimited parts
- Unlimited bars
- Anacrusis support
- Beaming options
- Phrase marks
- Text support for lyrics etc
- Ties & Tuplets
- Chord symbols - figured & contemporary
- Bars with 'invalid' quantity of notes

### NOTATION MANIPULATION

- Easily hide items for student question entry
  - Parts and bars to create 'blank' score
  - Individual voice control
  - Rests in empty bars
  - Clefs, time signature, key signature
  - Staff lines, bar lines
- Convert parts to rhythm with a single click
- Ensure students only enter single notes if required
- Lock rhythm and / or pitch of shown notes
- Notation palette control
- Chord palette control

### CONTACT

[www.risingsoftware.com](http://www.risingsoftware.com)  
 USA: 1-888-667-7839  
 Int: +61 3 9481 3320

## Record Keeping & Management

USERS	CLASSES	REPORTING
<ul style="list-style-type: none"> <li>Unlimited number of students</li> <li>User access levels                             <ul style="list-style-type: none"> <li>Student, Grader, Assistant, Teacher, Administrator, System Administrator</li> </ul> </li> <li>Organise into classes</li> <li>Users can be members of multiple classes</li> <li>Password strength control</li> <li>Secure hashed passwords (Cloud)</li> <li>Enforce password reset on login</li> <li>Import student lists</li> <li>Automatic student registration</li> </ul>	<ul style="list-style-type: none"> <li>Easily group students</li> <li>Set syllabuses that students must practise</li> <li>Enable/disable individual topics</li> <li>Set minimum levels for each topic</li> <li>Enable Keyboard, Guitar, Solfege controllers</li> <li>Easily clear class results</li> <li>Enable/disable question retry</li> <li>Hide classes from students</li> <li>Professor settings to control student practise progress</li> </ul>	<ul style="list-style-type: none"> <li>Practise score reports                             <ul style="list-style-type: none"> <li>Overall, Syllabus, Topic, Level breakdown</li> </ul> </li> <li>Test &amp; course reports                             <ul style="list-style-type: none"> <li>Overall, Entry breakdown</li> </ul> </li> <li>Student summary, activity &amp; log reports</li> <li>View scores for each class</li> <li>View scores for each test or course</li> <li>Date filtering with intelligent presets</li> <li>Filter test &amp; course attempts to show best, worst, last, combined etc</li> <li>Preview, export to PDF or CSV</li> </ul>
SCORING & TIMING	CLOUD & NETWORKING	LMS INTEGRATION
<ul style="list-style-type: none"> <li>Practise scores recorded daily</li> <li>Detailed &amp; question scores</li> <li>Amount of time spent practising recorded</li> <li>Separate scores kept for courses &amp; tests</li> <li>Each course &amp; test attempt kept separately</li> <li>Scores can be hidden from students</li> </ul>	<ul style="list-style-type: none"> <li>Install anywhere, campus, laptop or home</li> <li>Track all student work</li> <li>Easily set learning activities &amp; homework</li> <li>Fully networkable in older LAN environments</li> </ul>	<ul style="list-style-type: none"> <li>Canvas, Blackboard, Moodle, Schoology</li> <li>MusicFirst Classroom</li> <li>Supports single sign on, task result submission</li> </ul>
GRADING	MESSAGES	
<ul style="list-style-type: none"> <li>Library questions - instructor assessed</li> <li>View student answer and question</li> <li>Students and instructor comments</li> <li>Regrading supported, grading history stored</li> <li>Grading hints</li> <li>View student answers for library questions</li> </ul>	<ul style="list-style-type: none"> <li>Send internal messages                             <ul style="list-style-type: none"> <li>Single student</li> <li>Class</li> </ul> </li> <li>Students cannot reply</li> <li>Messages appear on student home screen</li> <li>Can be scheduled</li> </ul>	

## System Requirements & Miscellaneous

WINDOWS / MAC	BROWSER (CLOUD ONLY)	OTHER
<ul style="list-style-type: none"> <li>Windows 7, 8.1, 10, 11 - Mac OSX 10.13 or later</li> <li>500mb storage (initial without media downloads)</li> <li>Screen resolution minimum                             <ul style="list-style-type: none"> <li>Students - 1024 x 768 (Win) / 1152 x 720 (Mac)</li> <li>Instructors - 1280 x 768</li> </ul> </li> </ul>	<ul style="list-style-type: none"> <li>Chrome, Firefox (Win, Mac, Android)</li> <li>Edge (Win), Safari (Mac, iOS)</li> <li>iPhone, iPad, Chromebook</li> <li>Android Phone, Android Tablet</li> <li>2GB Ram</li> </ul>	<ul style="list-style-type: none"> <li>Internet connection required for initial activation. ongoing media downloads &amp; Cloud edition</li> <li>MIDI Input supported in various topics</li> <li>High DPI support</li> </ul>
COMPLIANCE & PRIVACY		
<ul style="list-style-type: none"> <li>GDPR compliant</li> <li>FERPA compliant</li> </ul>	<p>Please check our privacy policy for the most recent information</p> <ul style="list-style-type: none"> <li><a href="https://www.risingsoftware.com/privacy">https://www.risingsoftware.com/privacy</a></li> </ul>	

### CONTACT

[www.risingsoftware.com](http://www.risingsoftware.com)  
 USA: 1-888-667-7839  
 Int: +613 9481 3320